



Elevating your Expectations

Producing the
Highest Quality
Products.



↳ Inspiring trust and confidence ↳

We will add wings to your dreams!



Company Profile

Establishment

Echar was founded in 1984 by Mr. Ashok Nakman (Founder & Director). It was envisioned with a sound technical legacy for engineering, designing and manufacturing the latest world-class elevator equipment, with a commitment to provide the best innovative global products.

Work Culture

Echar is synonymous with innovation and engineering excellence. We identify potential innovations early on by continuously analyzing the opportunities. We translate the results into immediate measures to match the necessary requirements at personnel, technical and organizational levels.

At Echar, customer satisfaction is one of the performance drivers at the organization level. Consequently, we focus on personal visits, attendance at trade fairs / exhibitions and our internet presence facilitate excellent communication with our national & international customers. Good management practices have helped us to diligently adhere to delivery schedules, with prompt and attentive after sales services.

Well researched and accepted technical innovations are instantly incorporated before they become apparent. Our professional and sincere approach coupled with reliable inventiveness puts to test the best of our competitors. Feasibility studies and technological development is backed by the latest global infrastructure comprising of precision machinery and tools. This enables us to offer a truly world-class progressive work environment.

At Echar, we are bold enough to define our place in the business world. We remain in sync with the present modern times. Freedom of speech among employees inspires ideas and innovative skills and nurtures excellence. This enables us to dare and dream big towards our organizational goals and vision.

Our Commitment & Aspirations

The company's motto is Customer First. At Echar, we put the customer at the center of organizational decision-making. This earnest philosophy has enabled us to design the best, secured and comfortable elevators and ensure the paramount aspect of total safety.

At Echar, we believe that Excellence is not a one-time achievement, it's a habit. We are committed to our pursuit of excellence. A commitment that does not rest of consistency, but on bettering our performance and building on our customer relationships year after year.

At Echar, we believe in the tradition of offering a trustworthy customer experience. A diverse execution of the highest standards of service and solutions ensures a lifetime of satisfaction and quality at its best.

For our employees, excellent customer service leads to the path of increased productivity, a stress-free open work environment and greater job satisfaction.

Better begins here, when business works better, the world works better,

“

Responsibility

Environment is our Responsibility.

We are creating next generation products with high end applications and ultra-modern techniques. It is of immense satisfaction to be a part of sustaining and contributing to various causes for a better environment surroundings.

A humble way to give back to the clean society.

A holistic approach to carry this responsibility differentiates us from our competitors.

“I slept and dreamt that life was joy;
I awake and saw that life was service;
I acted and behold, service was joy.

- Rabindranath Tagore

”

Inspirations

Inspiring trust and confidence.

Without trust, business cannot function effectively. At Echar, we believe it is critical to build confidence both internally and with our customers, thereby creating sustainable and long-lasting relationships with your employees and customers.

Empowering talent and leadership.

Top talent is essential to business growth; therefore, it is mandatory for sourcing talent globally for global solutions. At Echar, we empower the right talent and ensure they grow with us, contributing to our overall success as a business.

**Let your Imagination and Aspirations take a flight.
Explore New Avenues with us.**

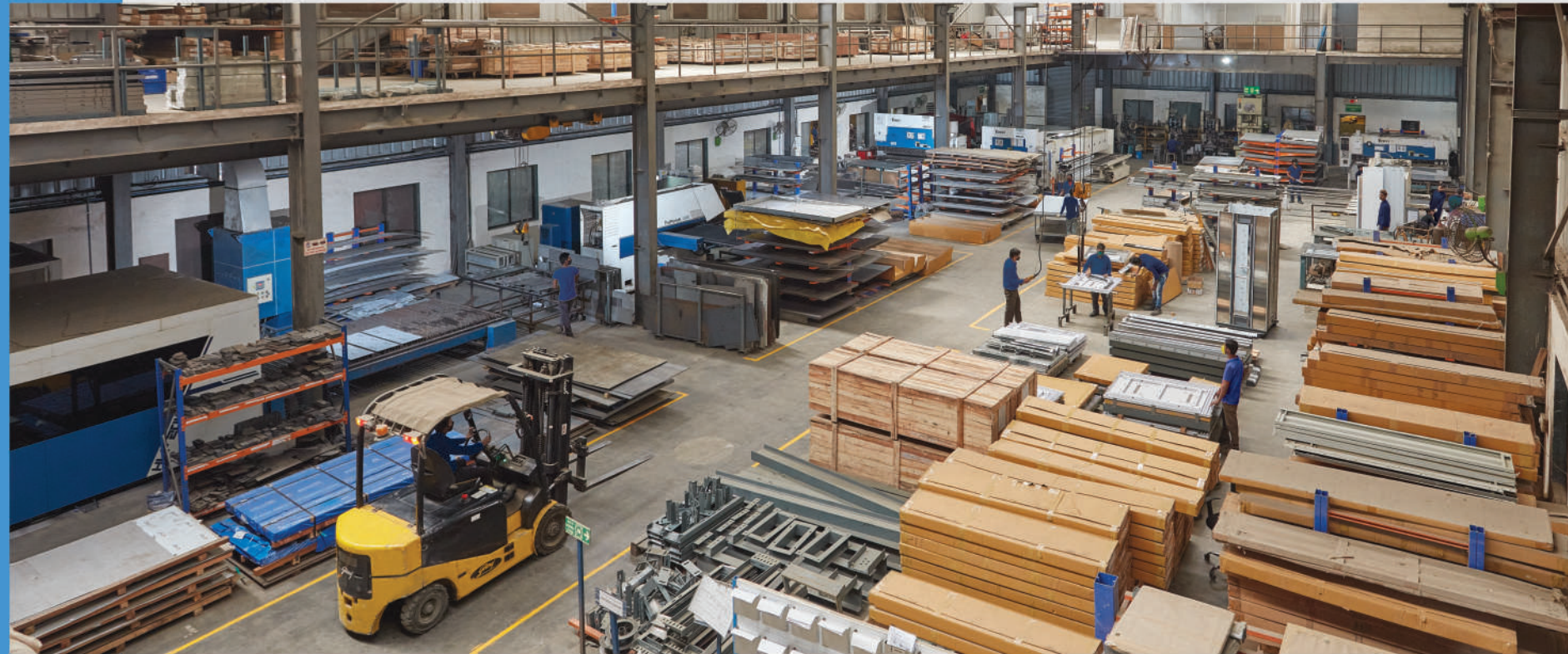
Our Production Capabilities

Our Strength

Being ISO 9001:2015 certified company, we have a vast & adequate expanse of 95,000 sq.ft with built up area of 45,000 sq.ft and handsomely maintaining all mandatory & environment govt. regulations, for a healthy & efficient work force.

We have on our rolls an estimate of hundred & eighty plus employees.

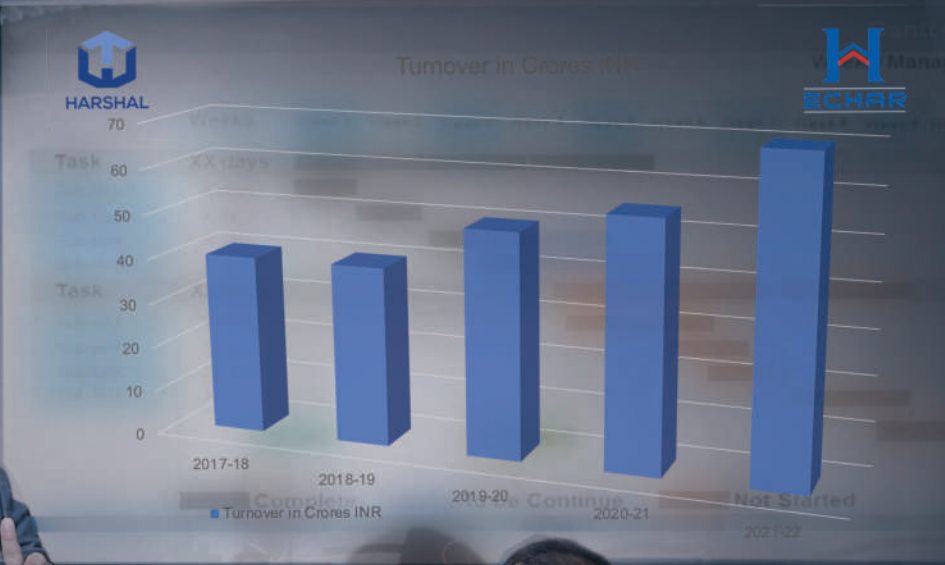
With an integrate production line in terms of expertise, know-how and ultra-techniques with well equipped latest state-of-the-art modern machineries supported by hi-tech infrastructure, comprising of precision machinery imported from Amada (Japan) CNC Turrent punch press, CNC Laser Machine, Hydraulic Press Brakes, Hydraulic Shearing Machine, In house powder coating facilities & assembly etc., Other modern-day machines which will cover the entire spectrum of finishing jobs with accuracy and develop innovative designs for the sheet metal industries, We have in-house testing machines & techniques for quality checks under strict supervision of qualified personnel.



We have invested the best in infrastructure!

Creating the next generation products with high-end applications & induction of ultra modern techniques.





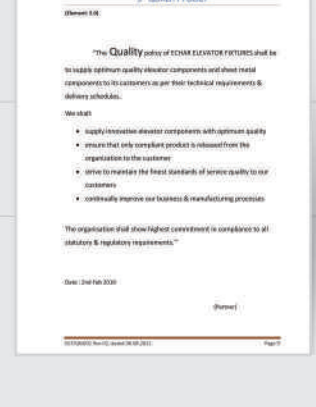
Developing teams and leaders with the characteristics that global business requires



Quality Policy



Quality Policy



ISO Certificate



Inspiring Trust and Confidence

- Echar Elevator Fixtures is a sister concern of Harshal Control Systems Pvt. Ltd.
- Our group has an experience of more than 3 decades in the Elevator industry
- 30+ years of association with Otis Elevators India.
- 10+ years of association with thyssenkrupp Elevators India. One of the biggest Indian suppliers for thyssenkrupp India
- 2 Factories close to Mumbai and one warehouse in Bangalore
- ISO 9001:2015 Certified
- Workplace Conditions Assessment Audit - Certified by Intertek





Economy

CAB - E01



- Rear Wall**
SS Hairline + Center Panel SS Mirror
- Side Walls**
SS Hairline + Center Panel SS Mirror
- Skirting**
SS Hairline
- Suspended Ceiling**
SS Hairline with Spot Lights

CAB - E02



- Rear Wall**
PO Red
- Side Walls**
Oyster White
- Skirting**
Oyster White
- Suspended Ceiling**
SS Mirror with Spot Light

CAB - E03



- Rear Wall**
Sky Blue (RAL-5015)
- Side Walls**
Oyster White
- Skirting**
Oyster White
- Suspended Ceiling**
SS Mirror with Spot Light



Modern

CAB - M01

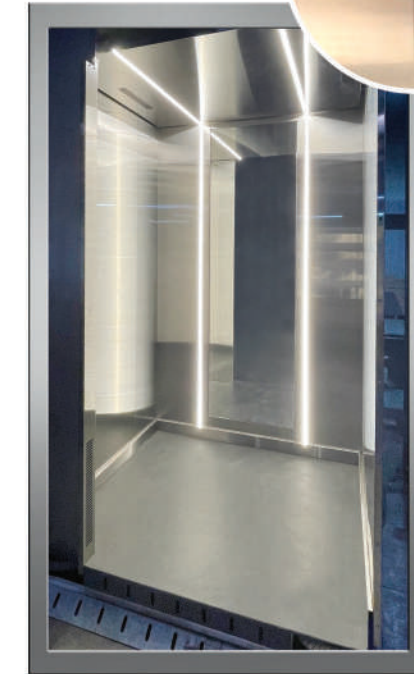


- Rear Wall**
Center Panel Etching + S.S. Mirror
- Side Walls**
S.S. Mirror
- Skirting**
S.S. Hairline
- Suspended Ceiling**
S.S. Mirror with Laser Cut

V-Grooving Panels for sharper panel to panel joint

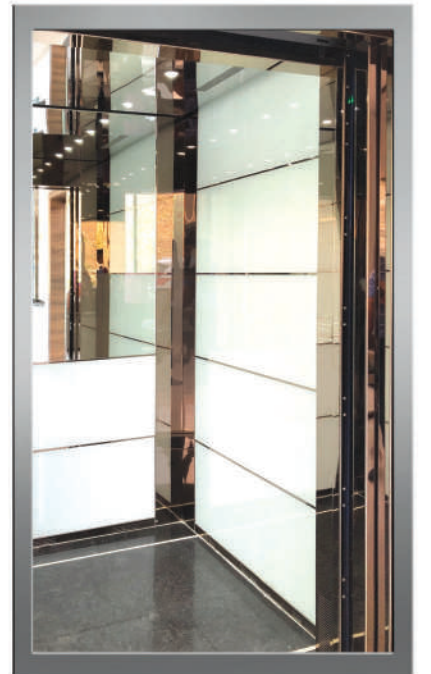


CAB - M02



- Rear Wall**
Center Panel Glass Mirror + SS Hairline + LED Strip Light
- Side Walls**
SS Hairline
- Skirting**
SS Hairline
- Suspended Ceiling**
SS Hairline with LED Strip Light

CAB - M03

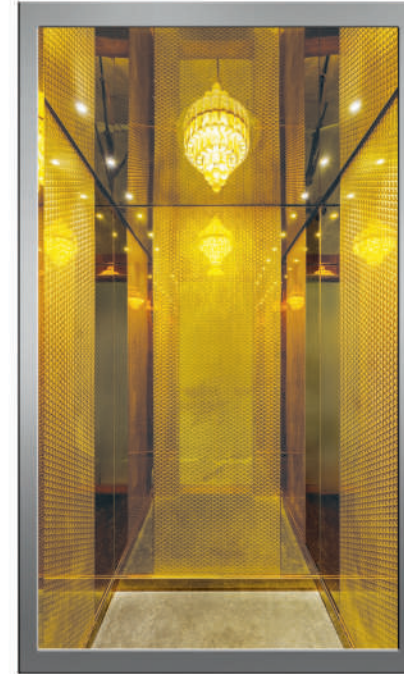


- Center Panels**
White Back Painted Glass + SS Bronze Mirror Inlays
- Corner Panels**
SS Bronze Mirror
- Skirting**
SS Bronze Mirror
- Suspended Ceiling**
SS Mirror with LED Spot Light



Premium

CAB - P01



- Center Panels**
SS Gold Etching
- Corner Panels**
SS Gold Mirror
- Skirting**
SS Gold Mirror
- Suspended Ceiling**
SS Gold Mirror with LED Spot Light
with Chandelier

CAB - P02



- Center Panels**
Black Pre Coated Design
- Corner Panels**
SS Black Mirror
- Skirting**
SS Mirror
- Suspended Ceiling**
SS Mirror with LED Spot Light

CAB - P03

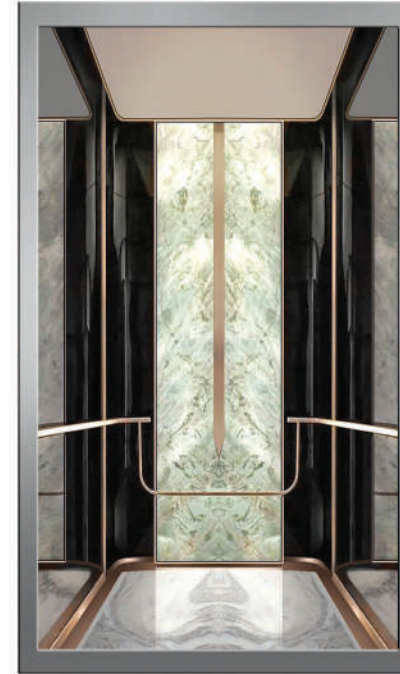


- Rear Wall**
SS Nickel Hairline
- Side Walls**
SS Nickel Hairline
- Skirting**
SS Nickel Mirror
- Suspended Ceiling**
SS Nickel Hairline with
LED Spot Light



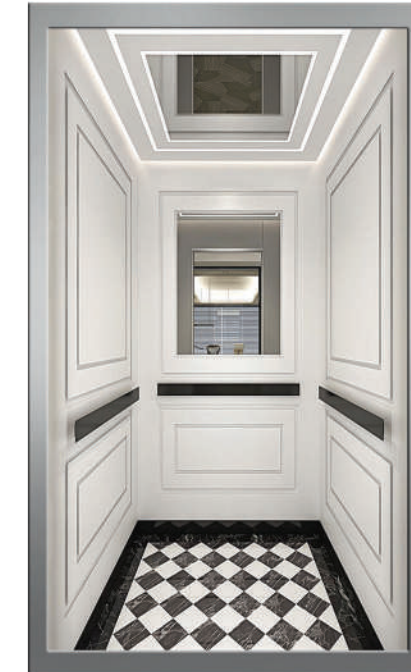
Interior Design

CAB - ID01



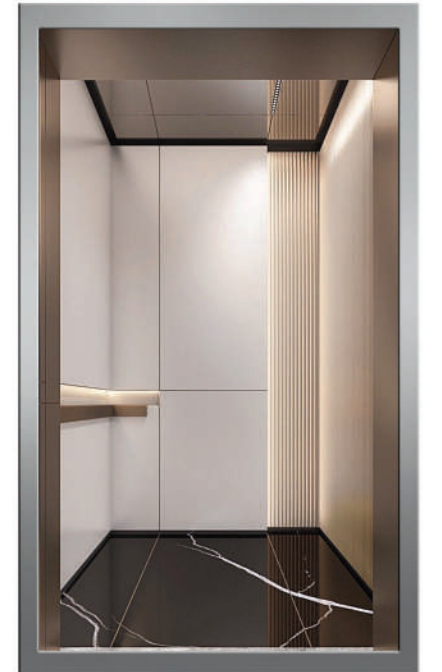
- Rear Wall**
Center panel Artificial Onyx,
Corners Black Mirror
- Side Walls**
Center natural mirror with
rose gold hairline
- Suspended Ceiling**
Ivory with rose gold border
- Skirting**
Rose Gold

CAB - ID02



- Rear Wall**
White Laminate with Grey Molding
and Natural Mirror
- Side Walls**
White Laminate with Grey Molding
- Suspended Ceiling**
White Powder Coated with Mirror
and LED Strips
- Flooring**
Black Checks with Black Mirror Skirting

CAB - ID03



- Rear Wall**
Ivory Laminate with Grooving
+ Flute Wooden Panel
- Left Wall**
Ivory Laminate with Grooving
- Right Wall**
Flute Wooden Panel
- Suspended Ceiling**
SS Mirror with LED spotlights
- Flooring**
Black Granite



Panoramic



Panoramic Cabin



Single Side Glass Cabin



Two Side Glass Cabin



Three Side Glass Cabin



Five Side Glass Cabin



Fermator
AUTOMATIC DOORS FOR LIFTS

Door Systems



Key Features :

- Easy to Install.
- Center and Side Opening.
- Opening 600mm to 1200mm easily available.
- Door Panels up to 2400mm height.
- Regular, Small Vision and Big Vision easily available.





Key Features :

- Complying to latest lift directive EN81-20/50
- Complies to Fire certification EN 81-58 E120.
- Door panels are Patented to EN81-20/50
- Faster Installation, Reliability, Easy Maintenance

Product Parameters & Range

Door Type	C2
Sill Depth	40mm
Side Frame Dim.	50mm x 40mm
Top Frame Dim.	50mm
Options	Grout Guard
Sill Load	400 Kg
Lift Speed	up to 2.5 m/s

CO mm	700	800	900	1000
CH mm	2000-2100			

• CO = Clear Opening • CH = Clear Height



NBSL Door Systems

- The interlock has passed 1 million life cycle test, CE certified; the landing door has passed 45kg pendulum impact test.
- Using self-weight door-closing mode, the self-weight and guide rod are placed in the inner side of door panel, for glass panel, the weight drop is beside the door panel.
- Delocking on door panel and door frame are available
- The interlock contact voltage: AC 110V, DC 220V
- Applicable for glass door panel

JJ	600	650	700	750	800	850	900	950	1000	1050	1100	1150	1200	1250	1300
A1	1240	1340	1440	1540	1640	1740	1840	1940	2040	2140	2240	2340	2440	2540	2640

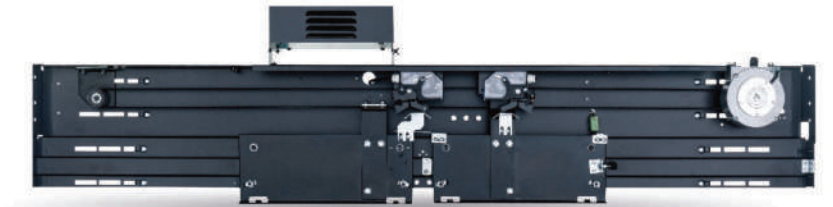
TKP161 - 05G05
Center Opening Landing Door Device

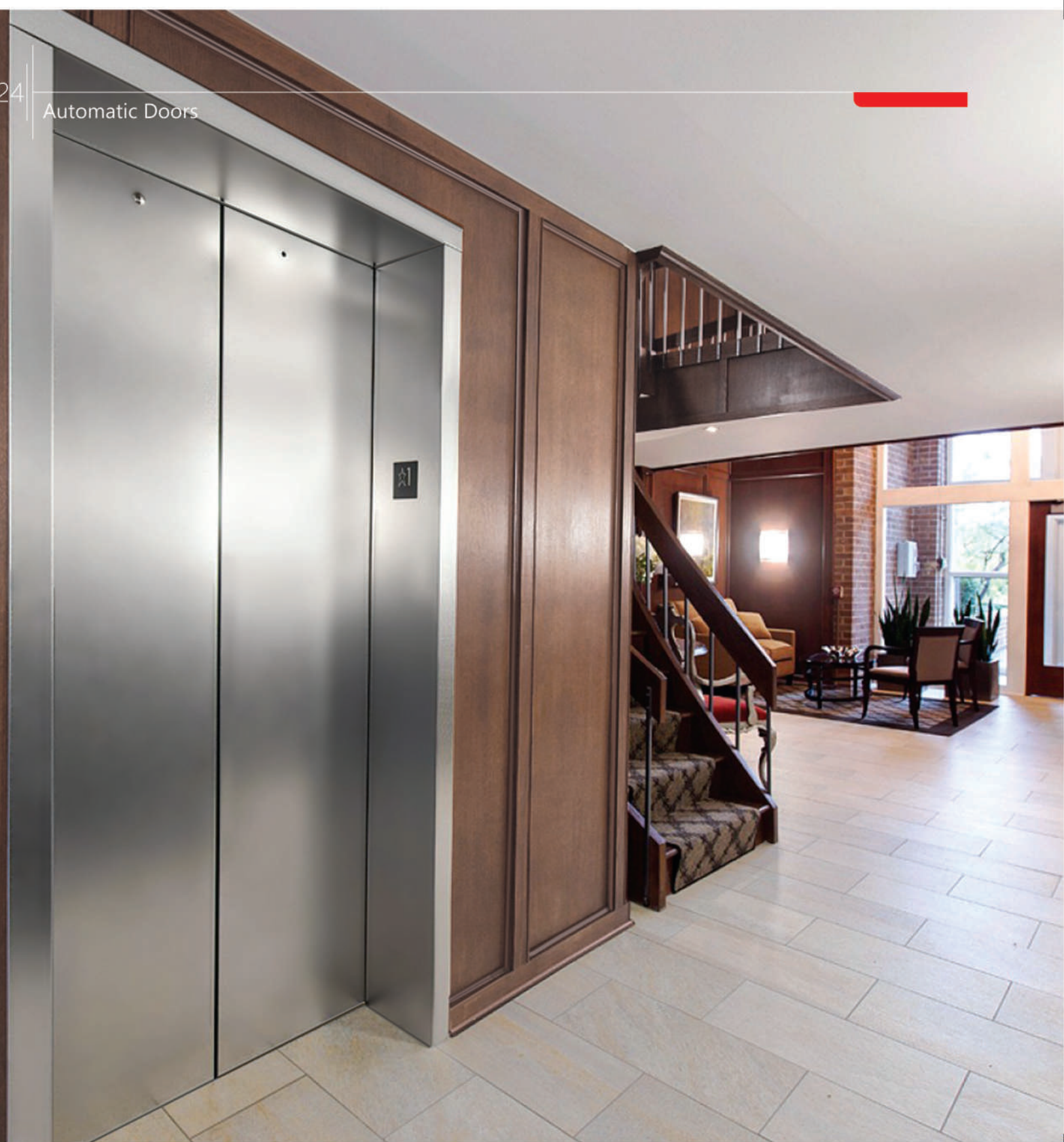


- Using PM motor, large rotary torque, high efficiency and energy saving, compact design Highly smooth operation, achieve the completely closed loop control of the torque, speed and position Using magnetic encoder.
- Using zinc plate integrally formed guide rail, more compact design.
- Using asyn. door clutch, optional car door lock, front wall installation.
- Total door panel weight ≤ 160kg; Voltage: 200-250 V, 50 /60 Hz.

JJ	700	750	800	850	900	950	1000	1050	1100	1200
A1	1460	1560	1660	1760	1860	1960	2060	2160	2260	2460

TKP131 - A09
Center Opening PM Door Operator





Automatic Door



S.S. Center Opening Autodoor



S.S. Telescopic Autodoor



S.S. Small Vision Center Opening Autodoor



Half Vision Glass Door



Big Vision Glass Door



Full Vision Glass Door



Rigorously Tested for Full Proof **Performance**



HCP/317

HLP/317

HCP/315

HLP/315

HCP/316

HLP/316 DLX

HLP/316



CSM/301



CSM/302



LSM/102



CSM/301 DLX



LSM/302



P101



LSM/301



HCP/405



HLP/405 DLX



HCP/406



HLP/406



HCP/501



HLP/501 DLX



Ultra - Thin Design

14 MM

SLIM BUTTON



Box Type
COP - LOP Series

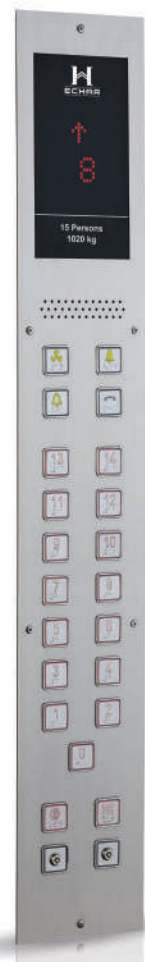


HCFB/981

HLP/981 DLX



HCHB/990



HLP/990



Hall Lantern



Emergency Alarm



Fire Man Switch

Touch Type

COP - LOP Series
Face Plate is made from toughened glass

TCB/809



TLB/809



TCW/810



TLW/810



SLIM BUTTON



EEF 1089



EEF 1809



EEF 1035



EEF 1305



HRL 1014



HRL 1011M



HRL 1008



HRL 3201



HRL 1009



HRL 1007



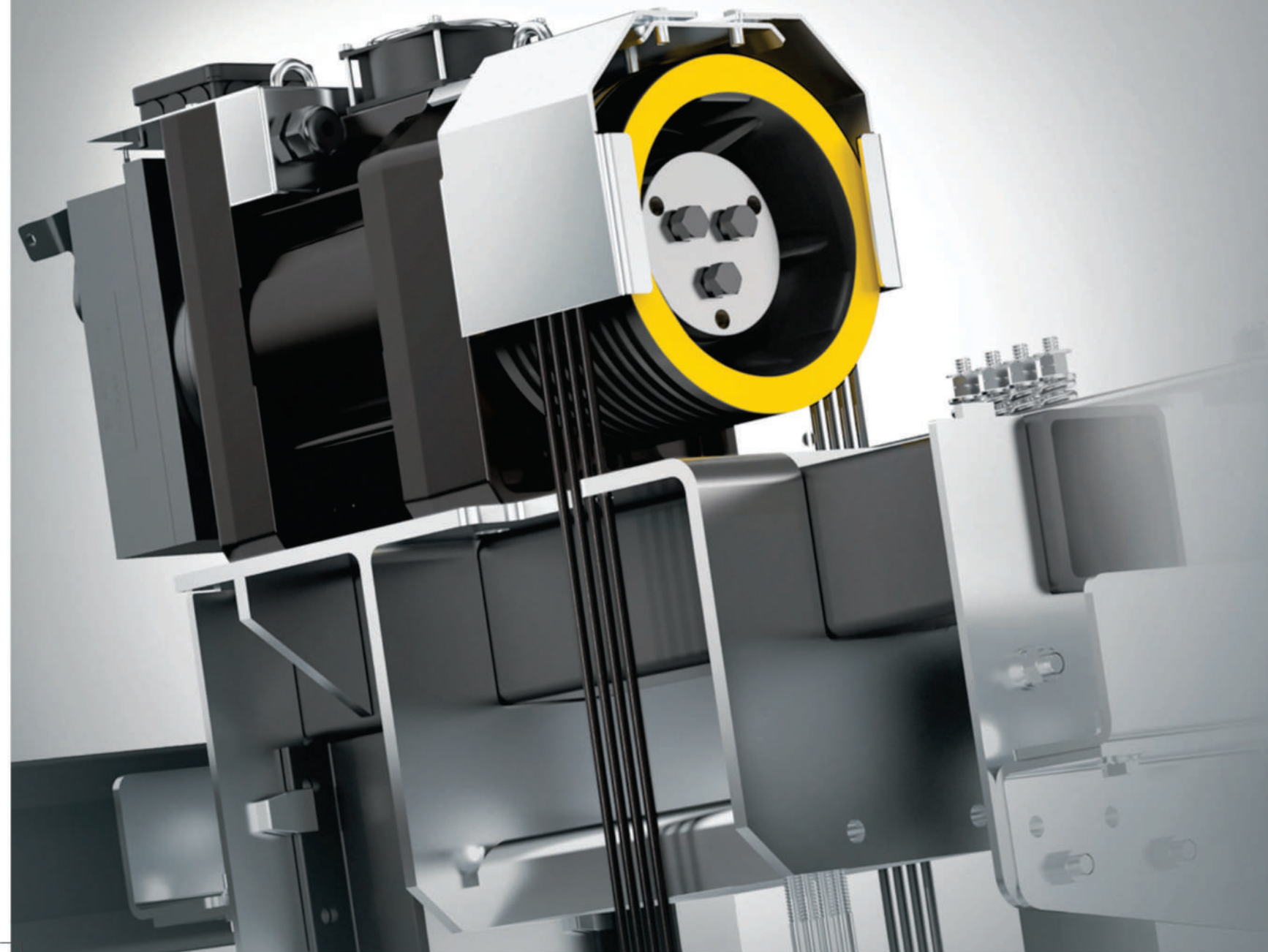
HRL 1017



HRL 11



More **Power** More **Efficient**

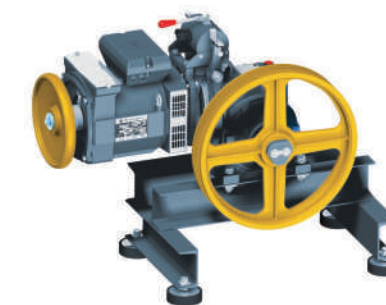


Montanari Giulio & C.

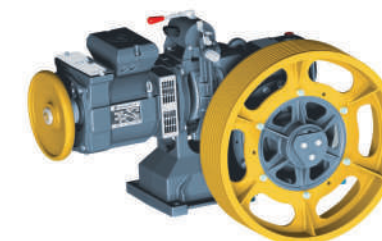
Geared Machine Unit



M 77
Traction Machine

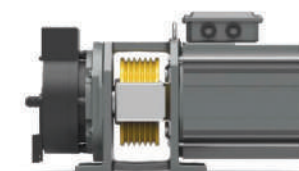


M 67
Traction Machine



M 93
Traction Machine

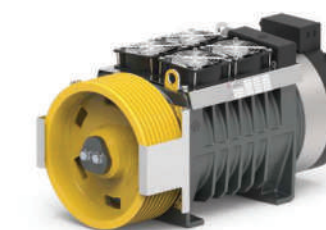
Gearless Machine Unit



MGI 17
Traction Machine



MGI 27S
Traction Machine



MGI 27 ML
Traction Machine



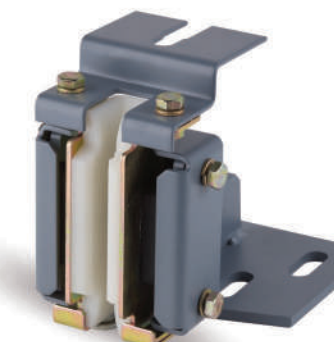
Our well-known European suppliers assure that all our complete products.

High Quality Elevator Components



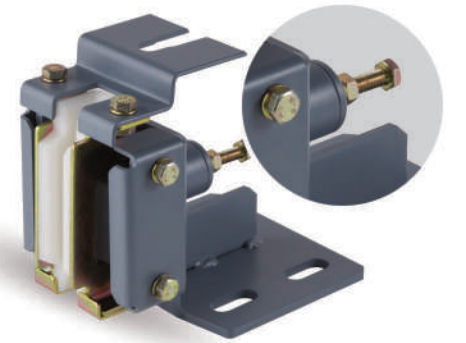
Guide Shoe ECGS-02

Capacity	up to 10 pax
Speed	up to 1.75 mps
Rail Size	9mm, 16mm



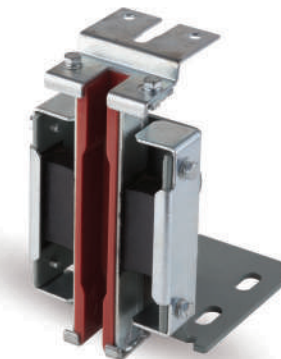
Guide Shoe ECGS-04

Capacity	13 to 20 pax
Speed	up to 1.75 mps
Rail Size	9mm, 16mm



Guide Shoe ECGS-04ST

Capacity	13 to 20 pax
Speed	up to 1.75 mps
Rail Size	9mm, 16mm



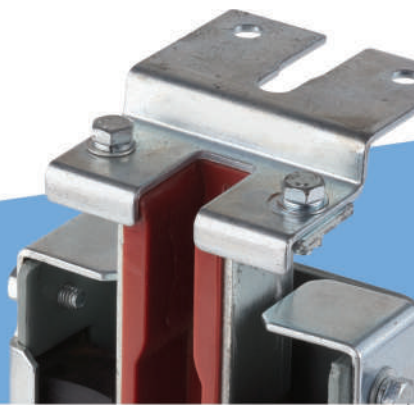
Guide Shoe ECGS-04HD

Capacity	20 Pax & Above
Speed	up to 1.75 mps
Rail Size	16mm



Guide Shoe ECGS-Roller

Speed	20 Pax & Above
Rail Size	16mm



Safety Blocks



Instantaneous (Single Roller)

- Up to 1 mps
- Up to 10 Passenger Capacity



Instantaneous (Double Roller)

- Up to 1 mps
- 13P to 20P Application



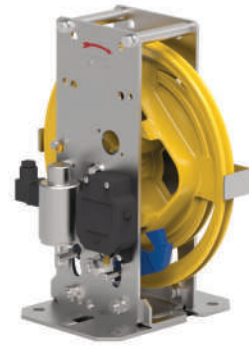
Progressive

- Speed 1mps to 2 mps
- For up to 20P application
- Make – Wittur

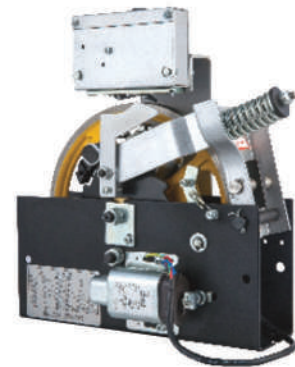
Overspeed Governor



NOR - Speed Governor
(Up to 1 mps)



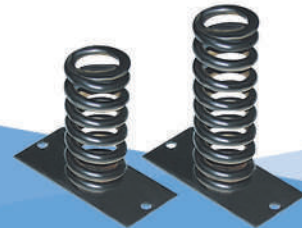
RQ - Speed Governor Bidirectional
(Up to 2 mps)



XSQ115-13
Overspeed Governor For MRL Elevator
(Up to 2 mps)



Diverter Pulley (CI Casting)



Buffer Spring



Oil Buffer Spring

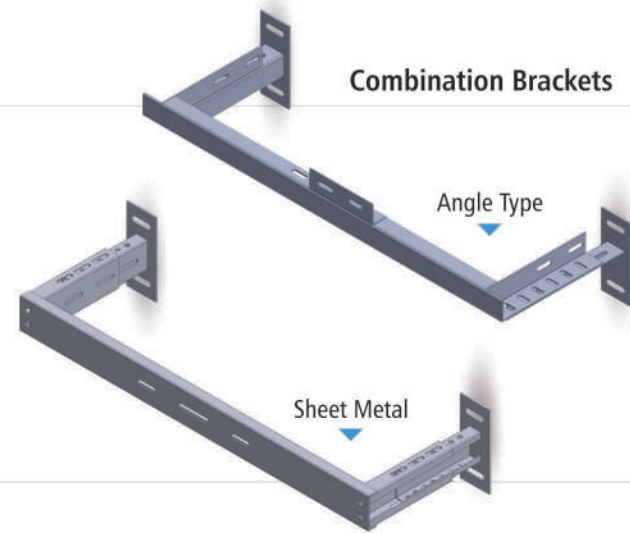


PU Buffer



Guide Rail

Product Model	SPEC (MM)	Weight / Pcs
T45/A	45* 45* 5	17.2
T70/B	70* 67* 9	37.37
T89-1/B	89* 62* 16	57.15



Combination Brackets

Angle Type

Sheet Metal



GP Brackets



Wire Rope



Guide Clip (Forging)



Guide Clip (Shaping)



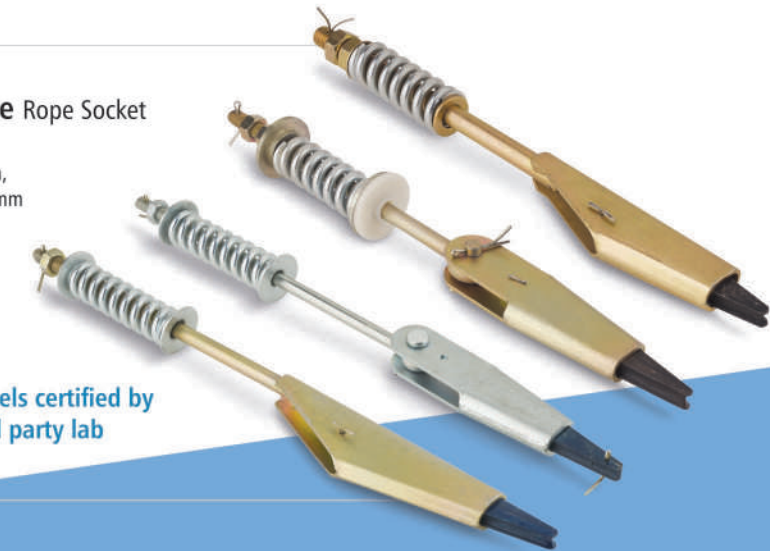
Guide Clip (Sheet Metal)



Bulldog Clip

Thimble Rope Socket

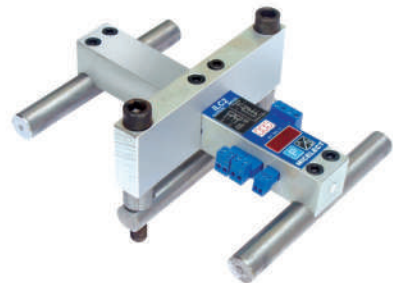
Rope Size :
6mm, 8mm,
10mm, 13mm



All models certified by
3rd party lab



Door Sensor



Rope Load Sensor



Cabin Load Sensor



OIL Collectors



OIL Cups



Magnet Cam with J Hook



Pit Switch



Rubber Mounts



Fan (RSP)



Blower Fan



Fan Grill Round



Fan Grill Square

Counter Weight Frame



1:1 CWT Frame

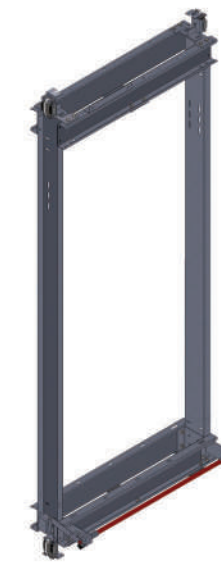


2:1 CWT Frame

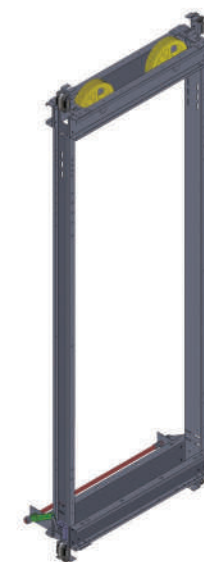
Car Frame



Cantilever Car Frame



1:1 Car Frame Main Assy.



2:1 Car Frame Top Pulley



2:1 Car Frame (Bottom Pulley)



Hydraulic Home Elevator

Home Elevator Hydraulic Kit

Key Features :

- Complete Fabricated Structure, if required
- Piston, Power Pack from Moris Italy
- Complete Car Frame Kit
- Guide Rails – 2.5 meters for Home segment



Imperial Towers - Tardeo



COEP College - Pune



Hydraulic Piston



Power Pack



Car Frame

Control Panel

Energy- efficient and simple to use our panels put you in control over your elevator systems.

The safe and More Energy-Saving **Integrated control**



MR Gearless Parallel Monoblock Elevator Controller Panel



Integrated Dive



Integrated Control Panel



MRL Control Panel

Site Installations

Our customers are known for their quality and service. They have installed our products in some of the best projects across India.

Some Projects and Developers where our products were installed :



Imperial Tower - Tardeo, Mumbai



Indiabulls Sky - Lower Parel, Mumbai



Jaslok Hospital - Mumbai



Serum Institute of India - Pune





An ISO 9001 : 2015 Certified Company



Echar Elevator Fixtures

Plot No. B 25/1, TTC Industrial Area, MIDC,
Pipe Line Road, Airoli, Navi Mumbai - 400 708
(Maharashtra) INDIA

Mobile : +91 73045 34980 / 981 / 986

E-mail : sales@echar.co.in / sales2@echar.co.in

Harshal Control Systems Pvt. Ltd.

Gut No. 181, Uchat Road, Village Mangathane,
Taluka Wada, District Palghar, Maharashtra - 421303

E-mail : sales@hcsystems.co.in

Website : www.hcsystems.co.in

AIROLI UNIT



- Manufacture of Elevator Components and Kits**
- Cabins • Doors • Car and CWT Frames • COP & LOP
 - Push Buttons • Guide Rails • Machines • Brackets
 - Safety Components